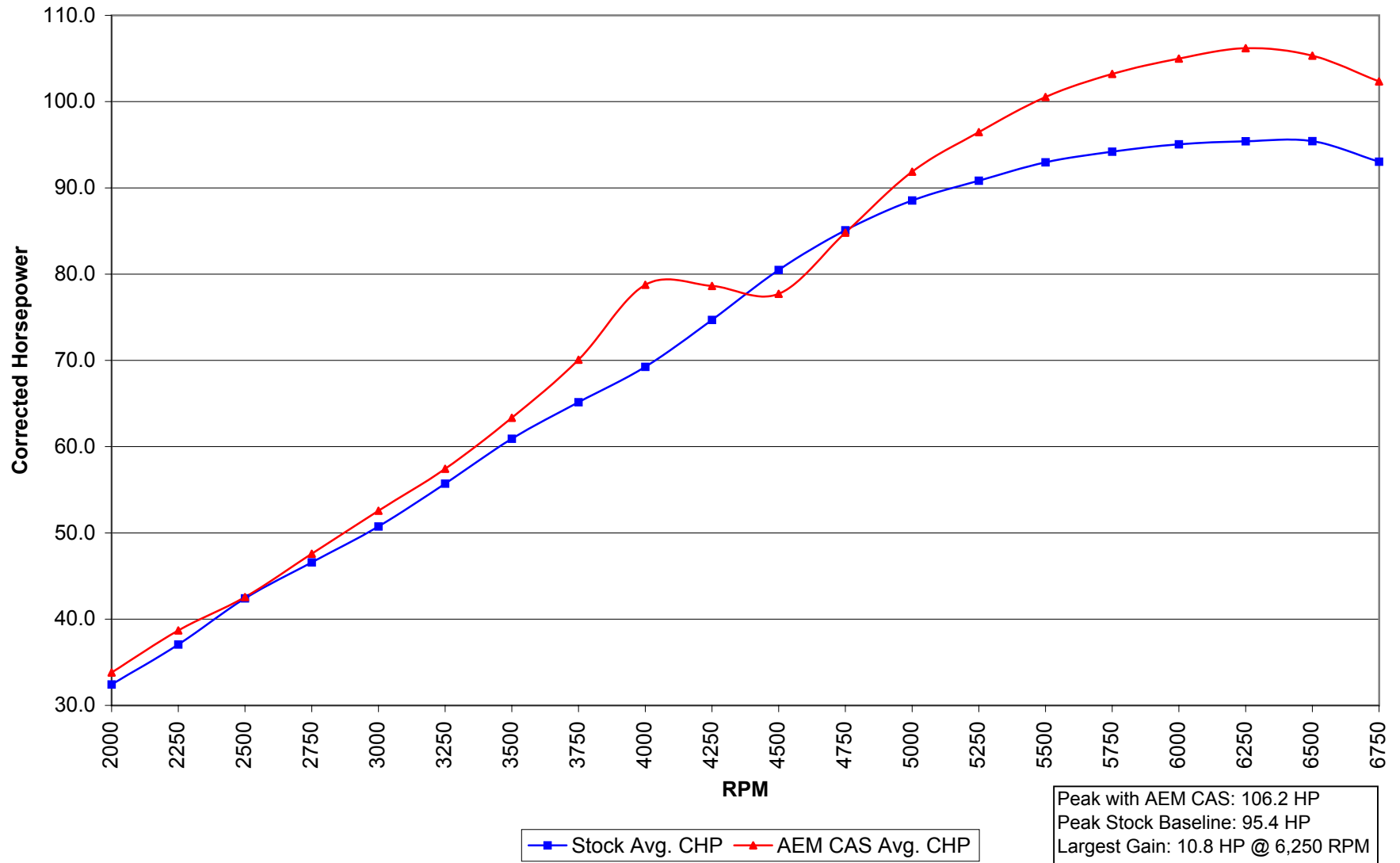
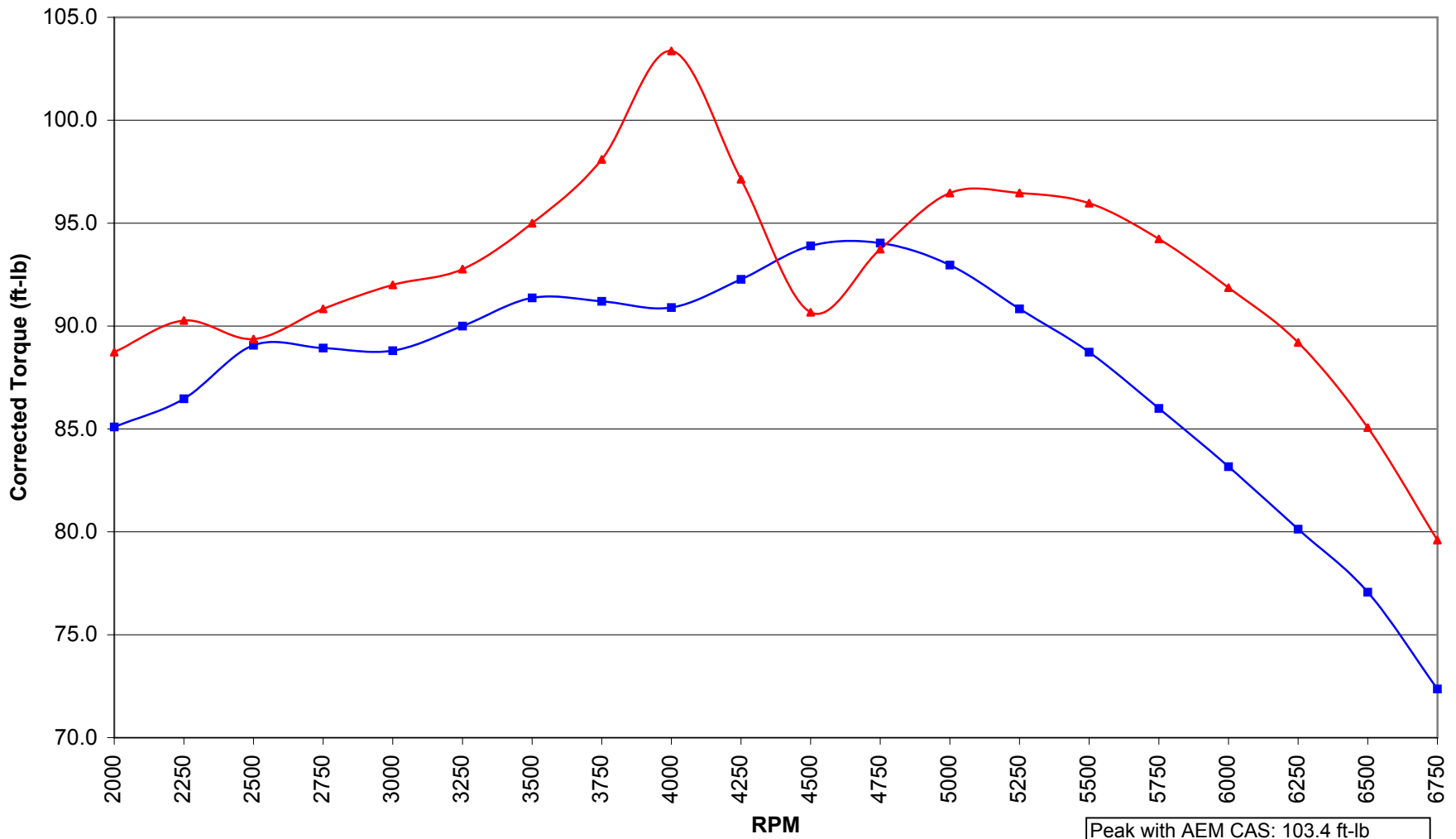


1998 Honda Civic DX with AEM CAS Corrected Horsepower





—■— Stock Avg. CTQ —▲— AEM CAS Avg. CTQ

Peak with AEM CAS: 103.4 ft-lb
Peak Stock Baseline: 94.0 ft-lb
Largest Gain: 12.5 ft-lb @ 4,000 RPM