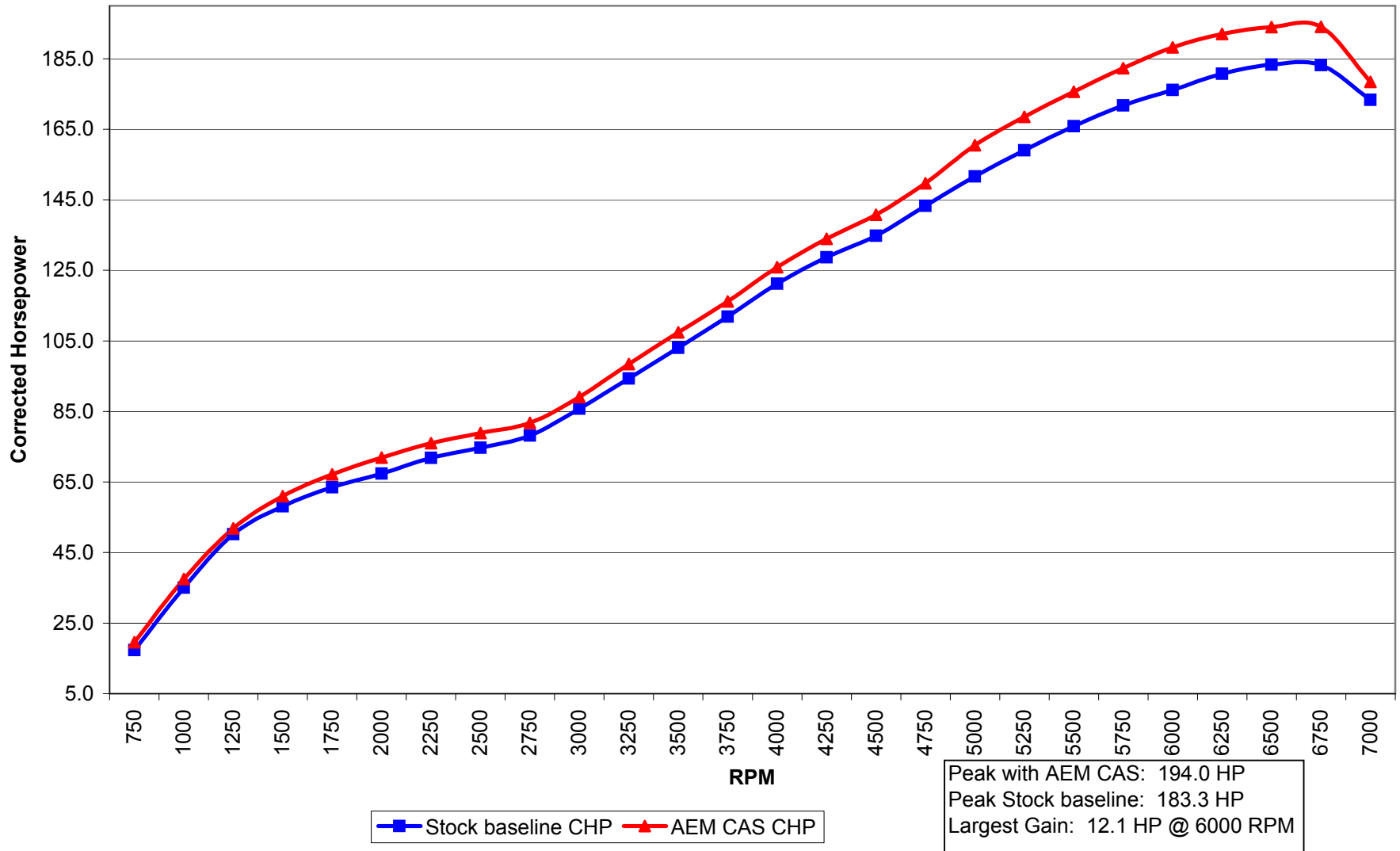
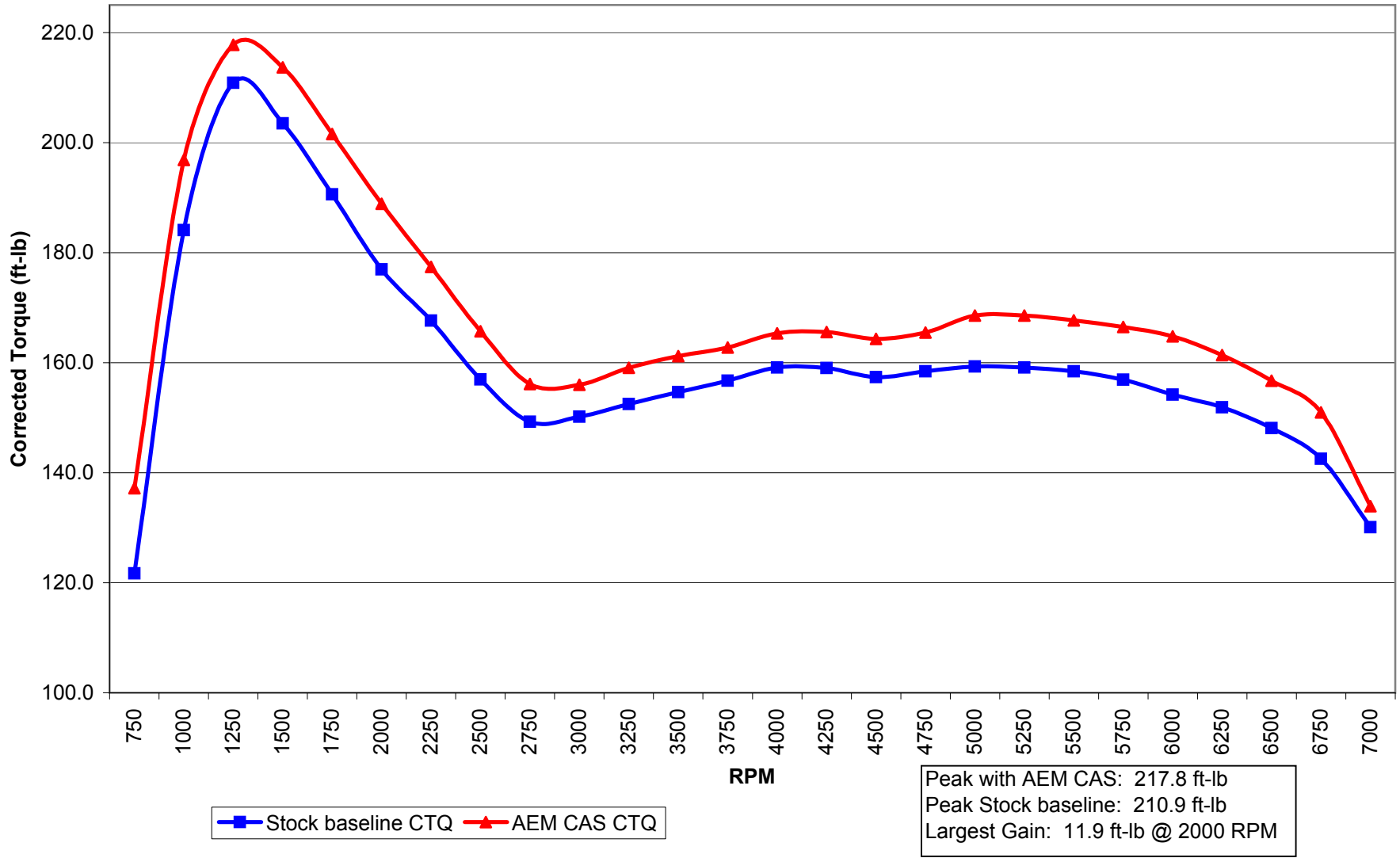


### 2003 Honda Accord V6 A/T with AEM CAS Corrected Horsepower

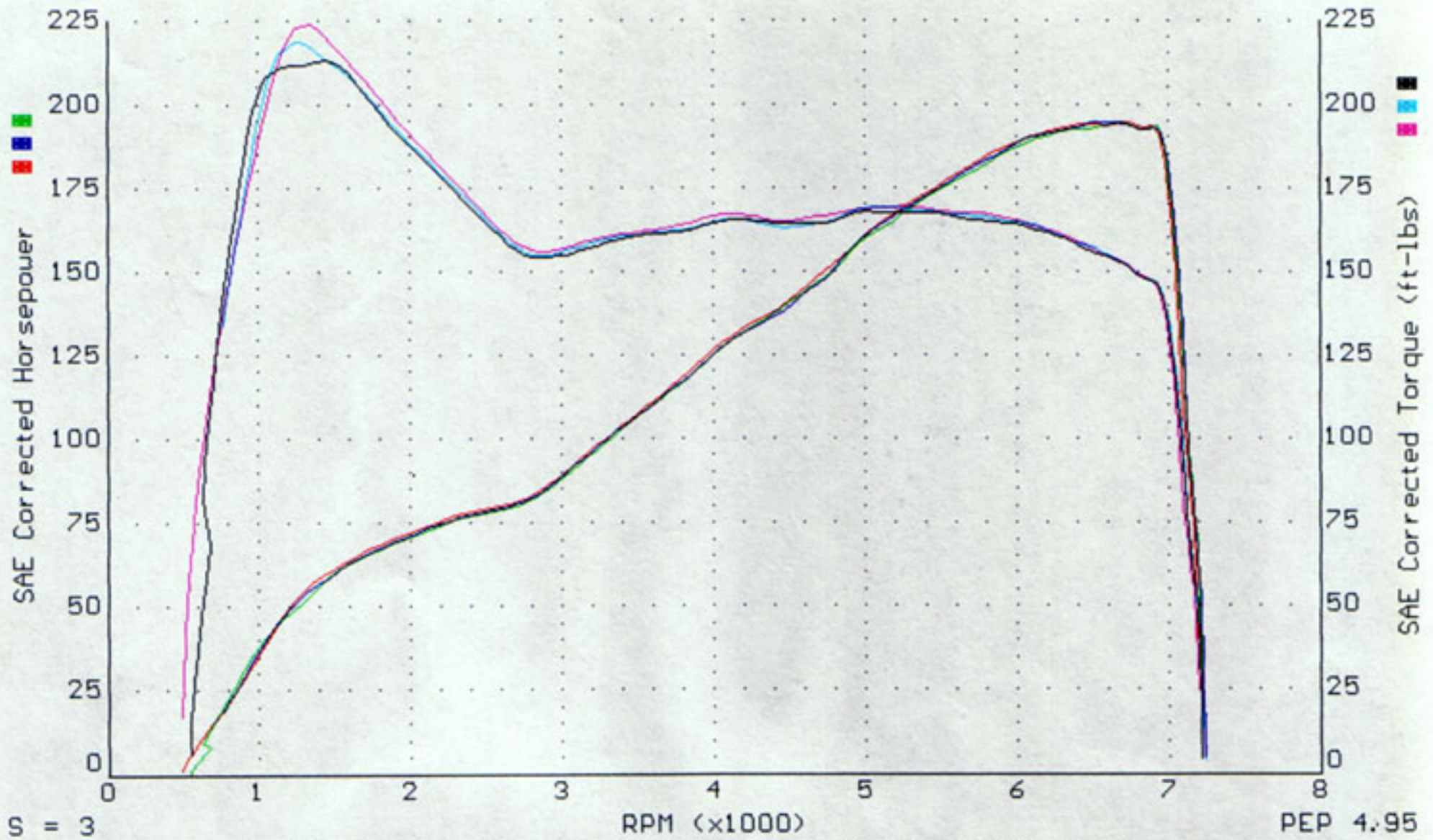


### 2003 Honda Accord V6 A/T with AEM CAS Corrected Torque



AEM.009 - CAS PROTOTYPE  
 AEM.010 - CAS PROTOTYPE  
 AEM.011 - CAS PROTOTYPE

RO  
 RO  
 RO



As measured on DYNOJET'S MODEL 248C DYNAMOMETER

PEP 4.95

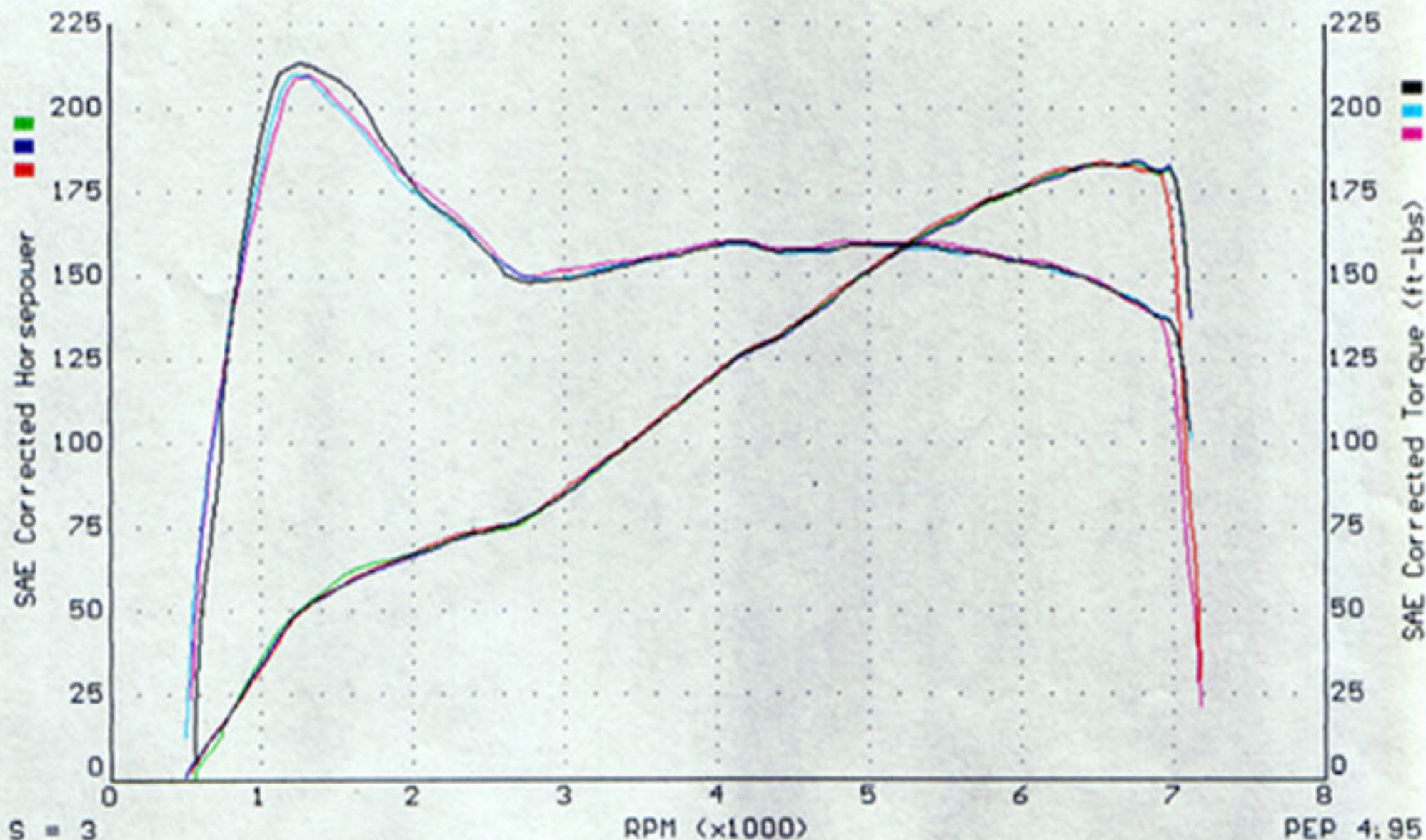
AEM.009            73.7 °F    29.92-0.40 in.Hg.    0 ft.    CF=0.98    RPM/MPH=101  
 Max POWER = 194.6    Max TORQUE = 213.4  
 CAS

AEM.010            74.3 °F    29.92-0.37 in.Hg.    0 ft.    CF=0.98    RPM/MPH=101  
 Max POWER = 194.8    Max TORQUE = 218.9  
 CAS

AEM.011            74.2 °F    29.92-0.38 in.Hg.    0 ft.    CF=0.98    RPM/MPH=101  
 Max POWER = 194.9    Max TORQUE = 224.0  
 CAS

AEM.004 - STOCK BASELINE  
 AEM.005 - STOCK BASELINE  
 AEM.006 - STOCK BASELINE

R0  
 R0  
 R0



As measured on DYNOJET'S MODEL 248C DYNAMOMETER

AEM.004                    73.4 °F    29.92-0.37 in.Hg.    0 ft.    CF=0.98    RPM/MPH=102  
 Max POWER = 183.3    Max TORQUE = 213.6  
 STOCK

AEM.005                    73.8 °F    29.92-0.40 in.Hg.    0 ft.    CF=0.99    RPM/MPH=102  
 Max POWER = 184.1    Max TORQUE = 210.4  
 STOCK

AEM.006                    73.9 °F    30.12-0.38 in.Hg.    0 ft.    CF=0.98    RPM/MPH=101  
 Max POWER = 184.1    Max TORQUE = 209.5  
 STOCK