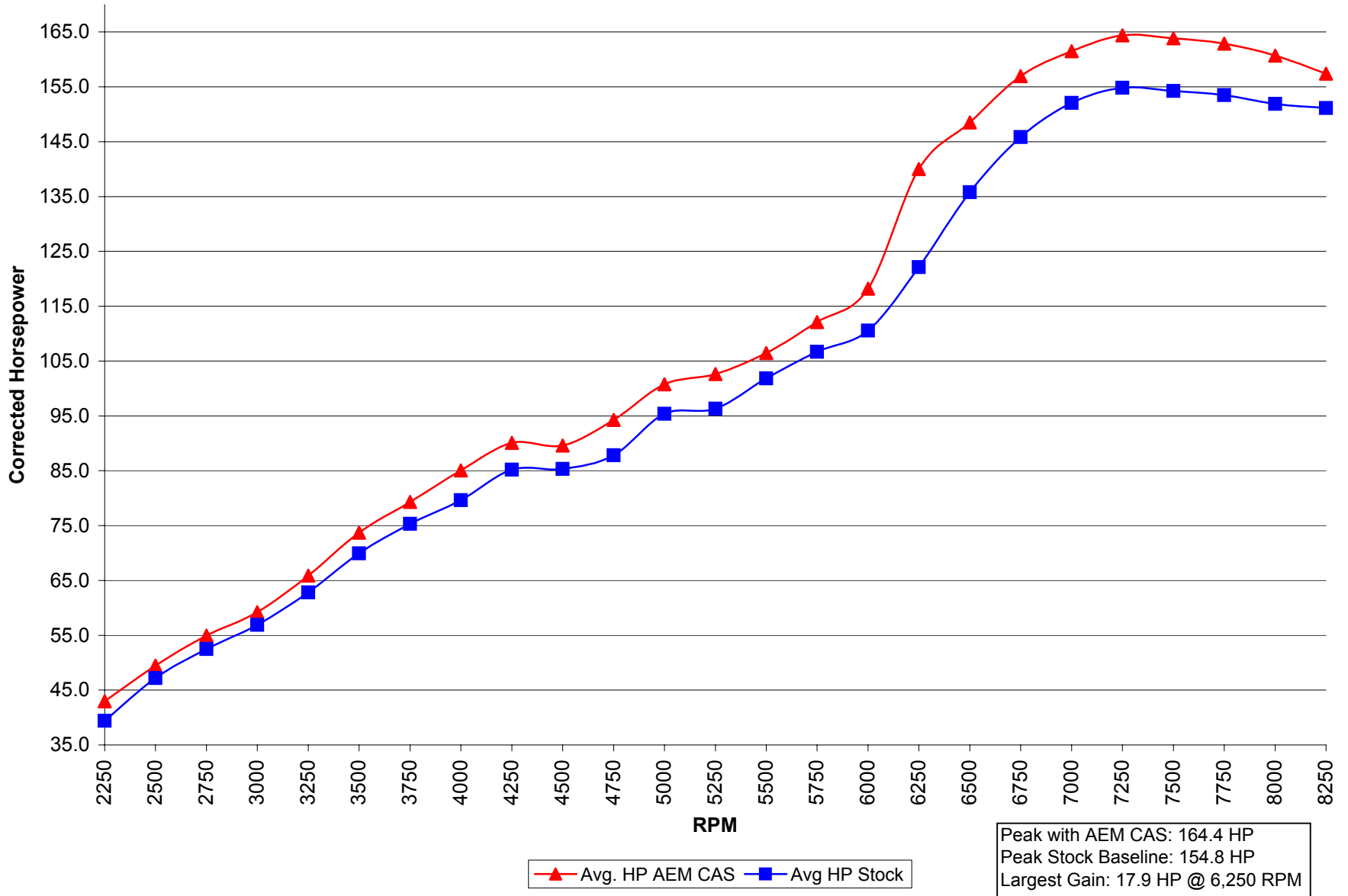
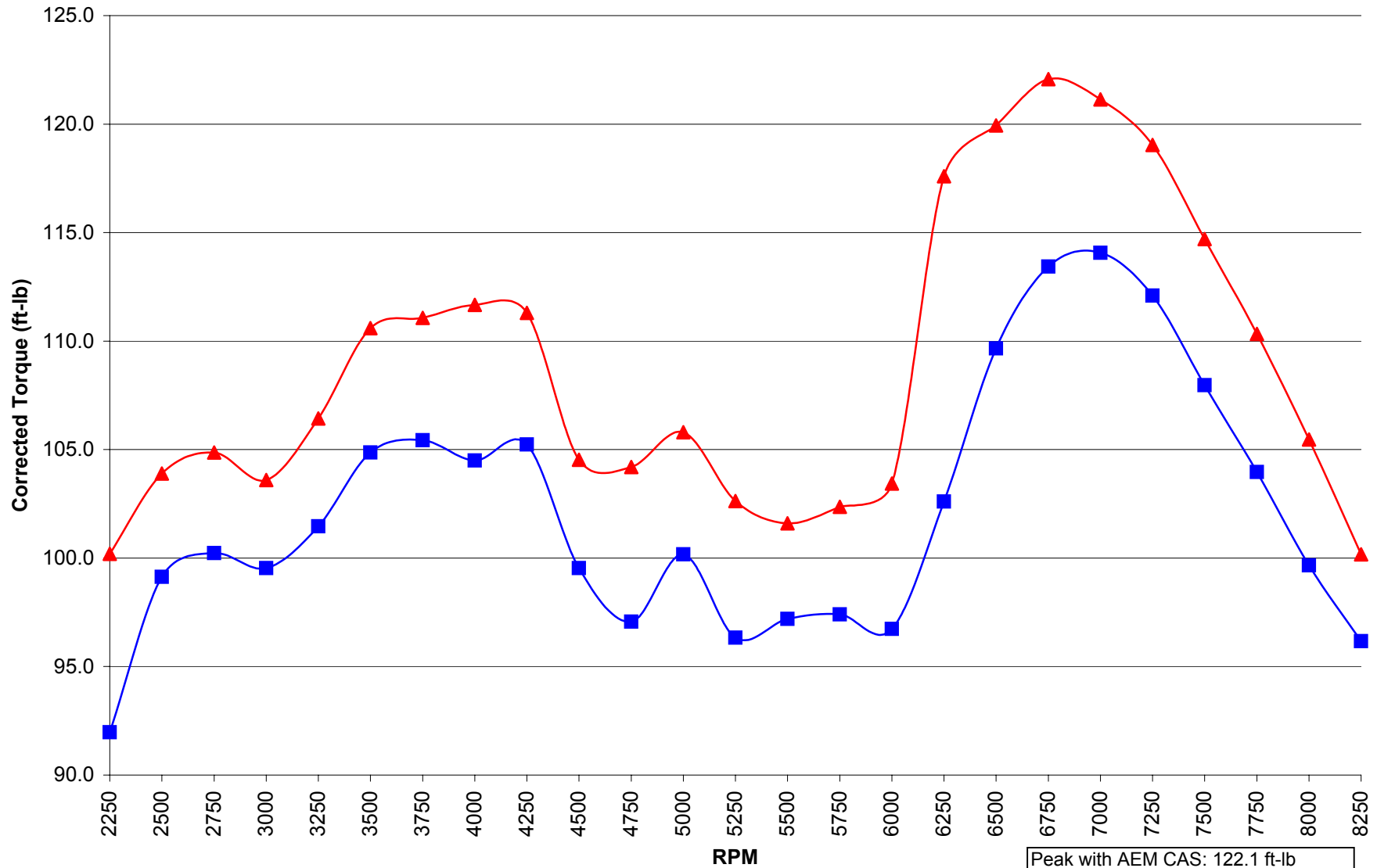


2000 Toyota Celica GTS with AEM CAS Corrected Horsepower



2000 Toyota Celica GTS with AEM CAS Corrected Torque (ft-lb)



▲ Avg. TQ AEM CAS ■ Avg TQ Stock

Peak with AEM CAS: 122.1 ft-lb
Peak Stock Baseline: 114.1 ft-lb
Largest Gain: 15.0 ft-lb @ 6,250 RPM